

Statistik

Gennemsnit

Observation

Diagram

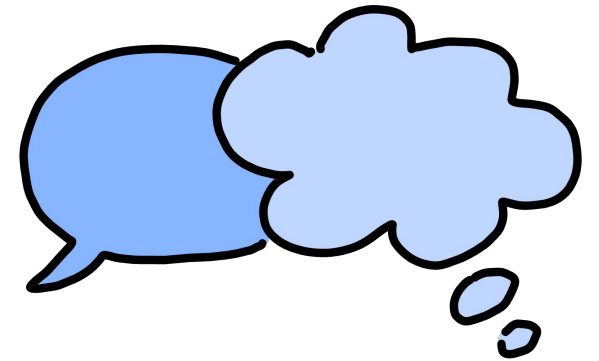
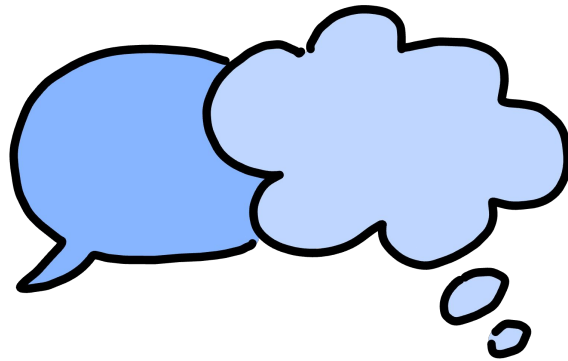
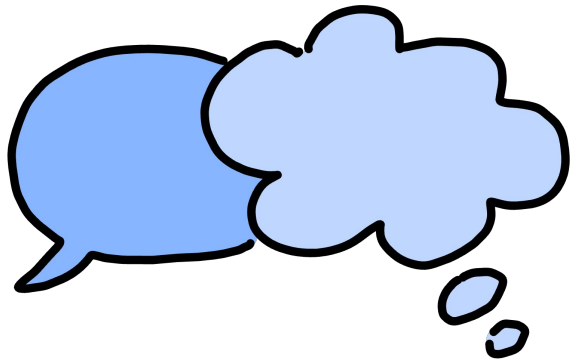
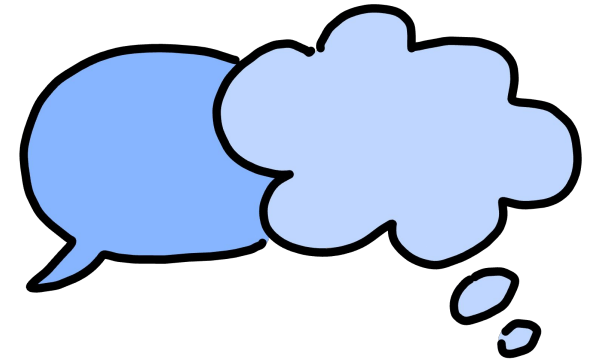
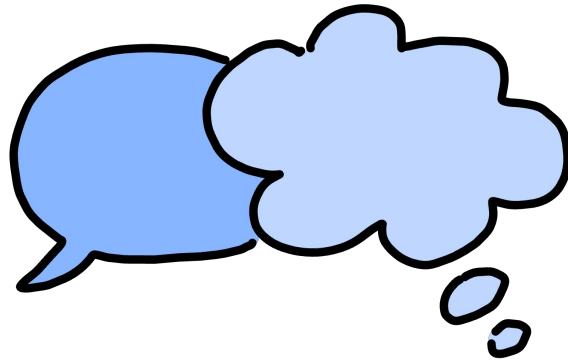
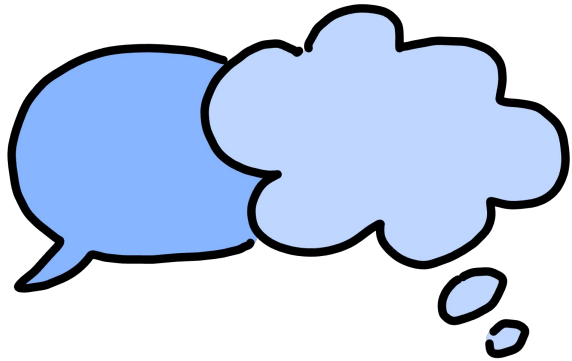
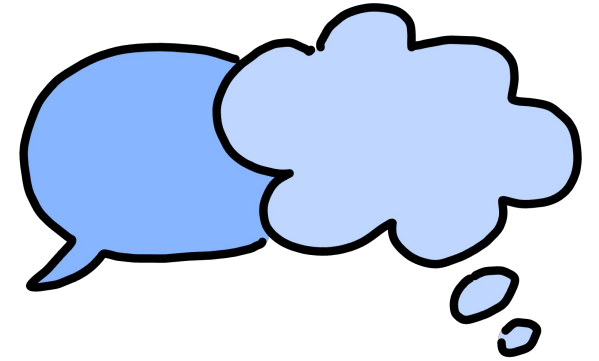
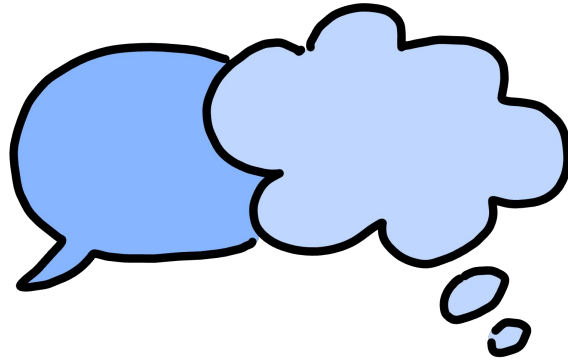
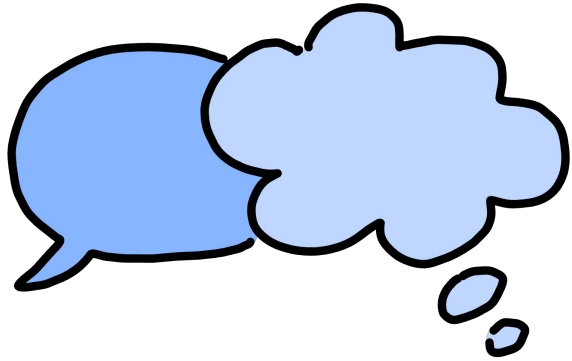
Hyppighed

Hyppighedstabel

Tabel

Mindsteværdi

Størsteværdi



Typetal

Variationsbredde

Middeltal

Median

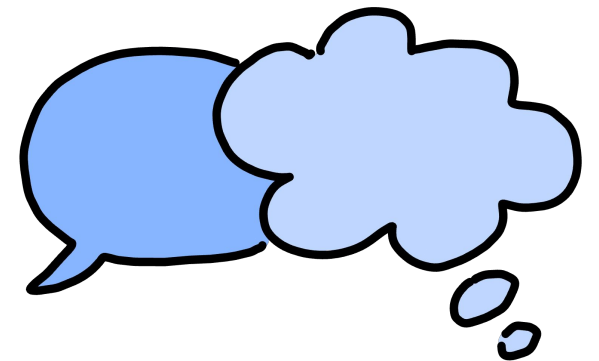
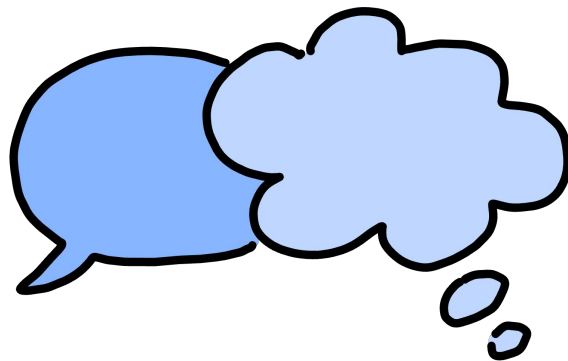
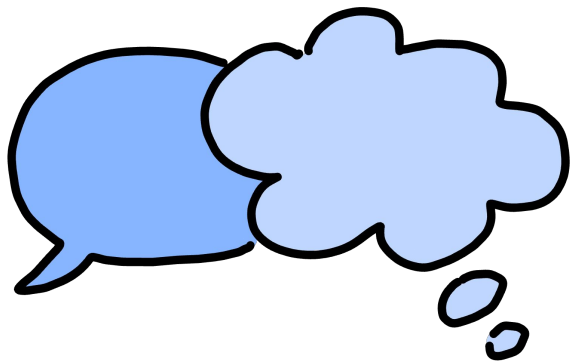
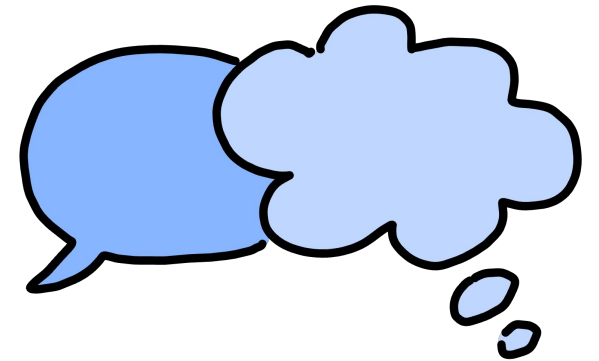
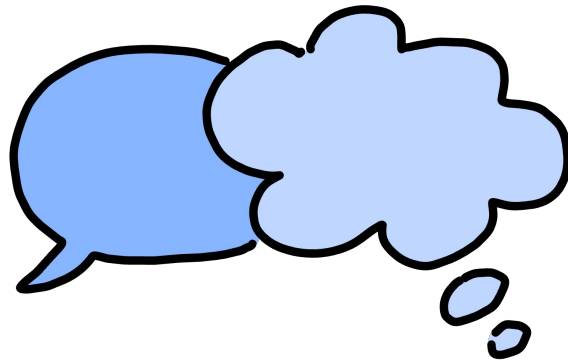
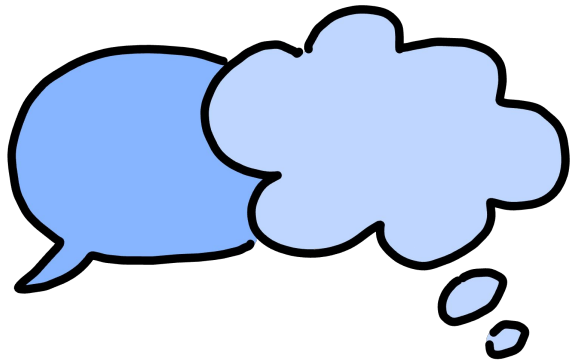
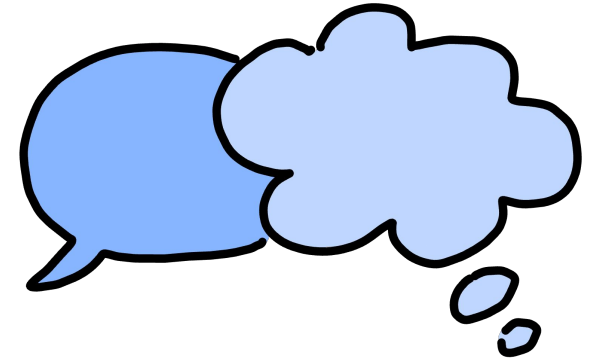
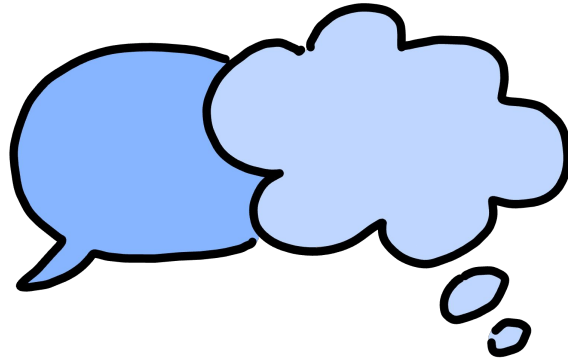
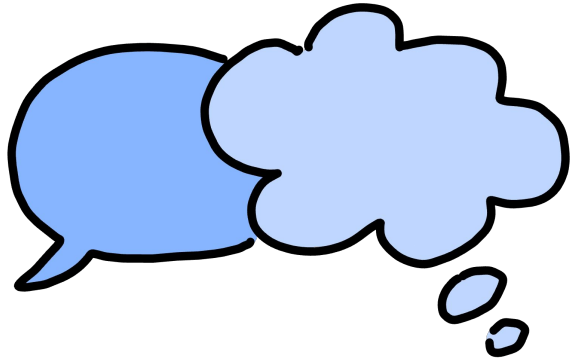
Frekvens

**1. kvartil/nedre
kvartil**

**3. kvartil/øvre
kvartil**

Boksplot

Interval



At indsamle, ordne, analysere og præsentere tal i tabeller eller diagrammer.

Summen af alle observationer divideret med antallet af observationer.

Det man tæller i statistikken.

En illustration, der viser resultater af en undersøgelse.

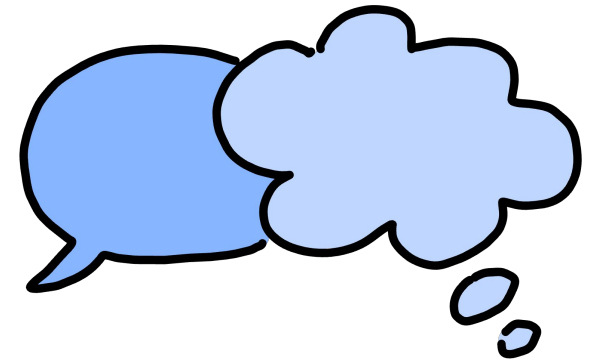
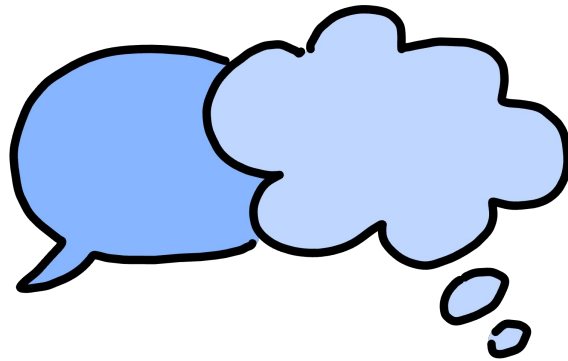
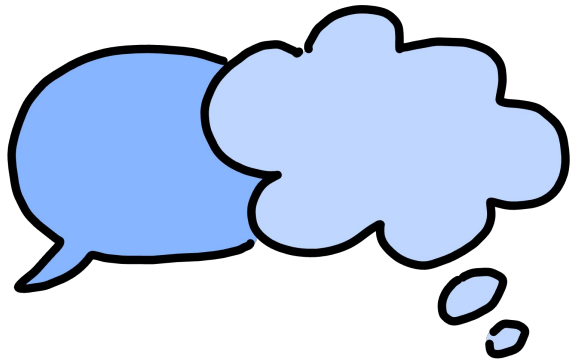
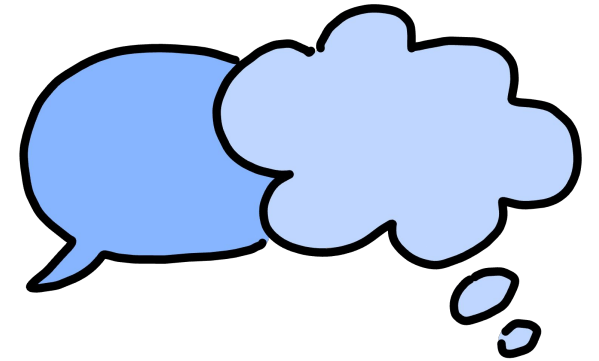
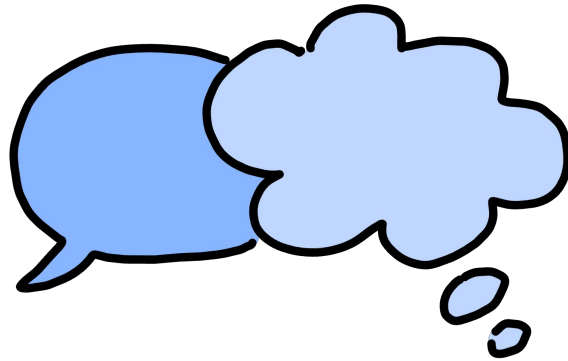
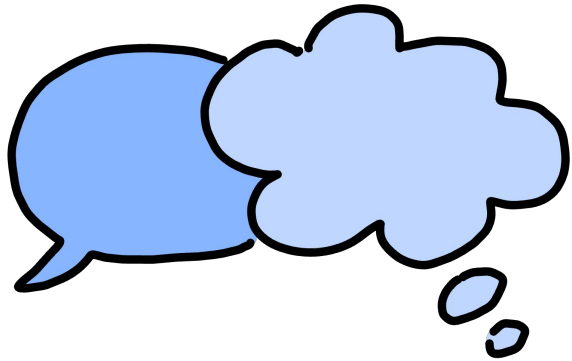
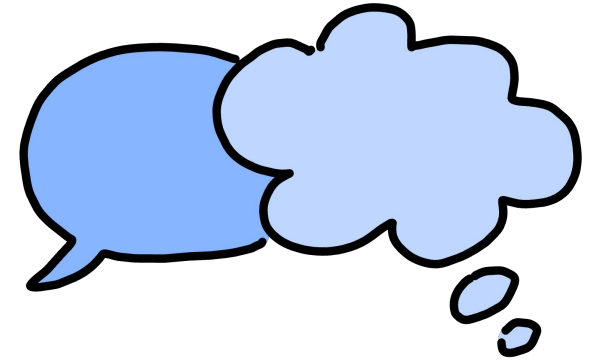
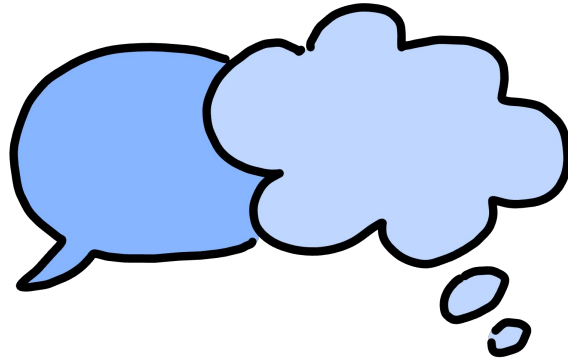
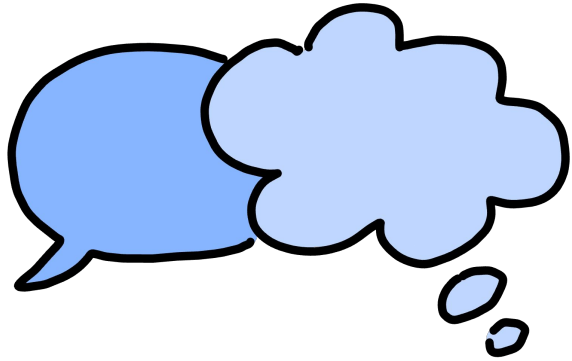
Antal gange et tal optræder i en række observationer.

En tabel, der indeholder observationer og hyppigheden af dem.

Et skema, der viser resultater af en undersøgelse.

Den mindste værdi, der er observeret.

Den største værdi, der er observeret.



Den observation, der optræder flest gange.

Forskellen mellem mindsteværdien og størsteværdien.

Summen af alle observationer divideret med antallet af observationer.

Den midterste værdi i en række observationer sorteret efter størrelse.

Hyppighed divideret med det samlede antal observationer.

Det tal, som 25% af observationerne er mindre end.

Det tal, som 75% af observationerne er mindre end.

Diagram, der illustrerer median, kvartiler samt mindsteværdi og størsteværdi.

En mængde tal, der ligger mellem to givne tal.

